

WARING COMMERCIAL

Xtreme Blender with Electronic Membrane Keypad and 64 oz. Raptor Container

MX1050XTX

Unit Information

Limited 3 Year Motor Warranty
Two Year Parts & Labor

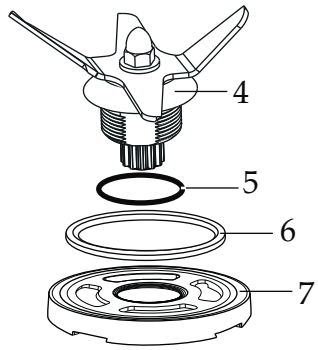
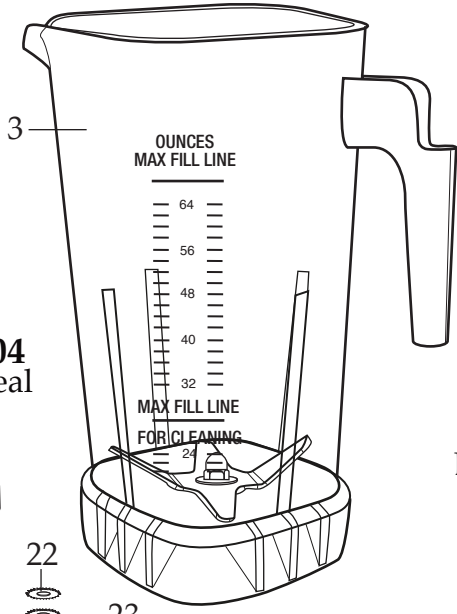
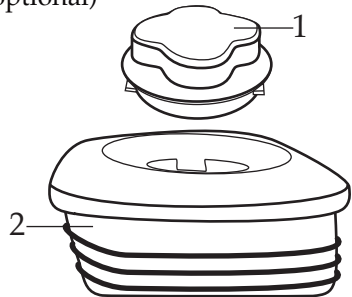
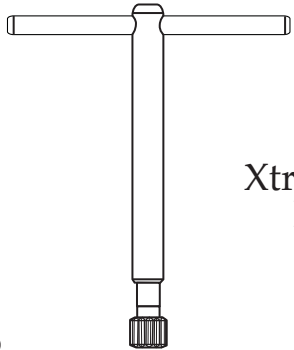
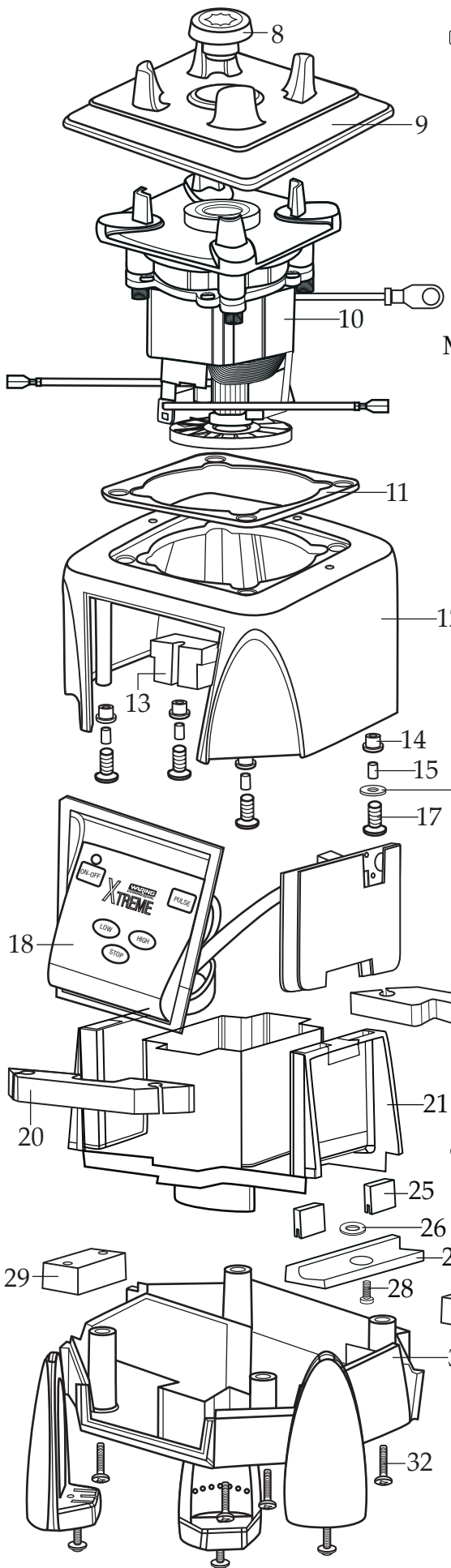
60Hz - 13 Amps

Height 19" - Weight 15 lbs.

3 HP Motor

30,000+ RPM's

One Piece Dishwasher Safe
Removable Jar Pad



030889
Blending Assembly Kit

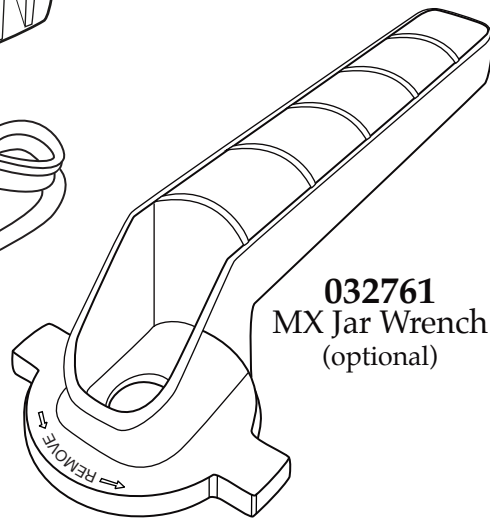


Illustration #	Part #	Description
1	026425-E	Jar Lid Cover
2	026424-V	Jar Lid <i>(changed after 12/6/2012)</i>
3	503326	64 oz. Stackable Raptor Container ONLY
	503398	64 oz. Stackable Raptor Container with Blending Assembly <i>(on units after 2/17/2011)</i>
	503350	64 oz. Stackable Container with Blending Assembly
4	503397	Blade Assembly <i>(changed after 2/17/2011)</i>
5	024271	Bearing Holder O Ring
6	024268	Nut Gasket
7	029631	Bearing Holder Nut
8	028538	Drive Coupling
9	026442	Jar Pad
10	035396	Leili Motor without Sensor <i>(on units after 7/13/2017)</i>
	028100	ECM Motor without Sensor
11	026437	Dampening Plate Gasket
12	028032-09	Black Top Housing
13	028541	Motor Foam (2 required)
14	026439	Dampening Plate Bushing (4 required)
15	026453	Dampening Plate Sleeve (4 required)
16	026459	Washer
17	028929	Sems (4 required)
18	036396	Control Panel with Interlock <i>(on units after 3/5/2019)</i>
	029809	Soft Start Control Panel (use 036396)
19	028248	Top Housing Foam Rear Baffle
20	028249	Top Housing Foam Front Baffle
21	036814	Motor Housing 2.78" <i>(on units after 7/10/2019)</i>
	028240-67	Motor Housing <i>(on units after 7/13/2017)</i>
	028240	Motor Housing
22	002943	Washer (2 required)
23	026925	Cord Set
24	007556	Strain Relief
25	034900	PCB Cushion (2 required <i>on units after 7/10/2019)</i>)
26	037232	Neoprene Washer <i>(on units after 7/10/2019)</i>

Illustration#	Part#	Description
27	037007	PCB Mounting Bracket <i>(on units after 7/10/2019)</i>
28	013768	Screw <i>(on units after 7/10/2019)</i>
29	028247	Bottom Housing Foam Baffle
30	028542	Foam Baffle
31	028241-09-X	Black Bottom Housing
32	012505	Screw (4 required)
33	026430	Corner Post (4 required)
34	028928	Sems (4 required)

