

# WARING COMMERCIAL®

Xtreme Blender with 4 Reprogrammable Beverage Stations and a 64 oz. Stackable Raptor Container

**MX1300XTX**

**MX1500XTX**

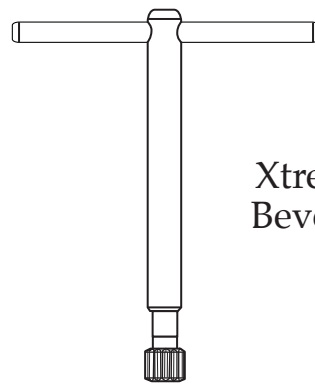
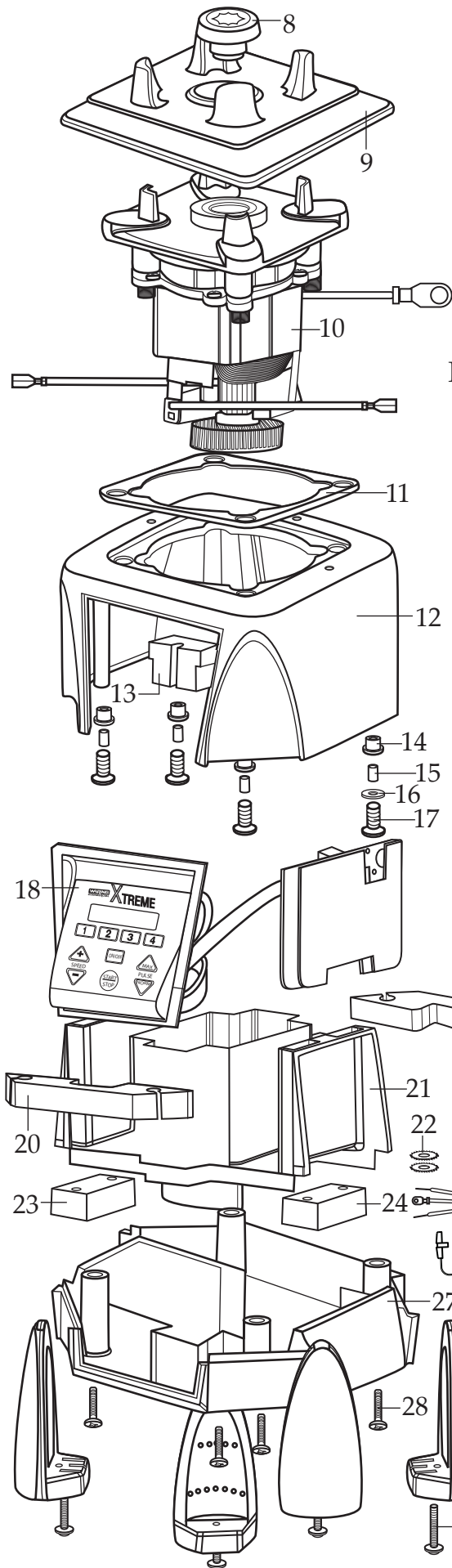
comes with Sound Enclosure

## Unit Information

Limited 3 Year Motor Warranty  
Two Year Parts & Labor  
60Hz – 13 Amps – 3.5 HP Motor

RPM's Maximum 30,000  
Minimum 5,000

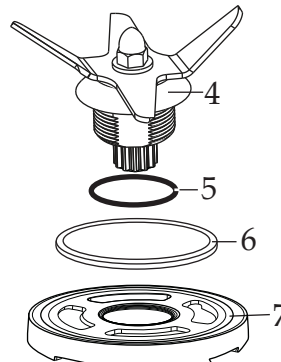
Height 21" – Weight 18 lbs.  
One Piece Dishwasher Safe  
Removable Jar Pad



**030351**  
MX Coupling Wrench  
(optional)



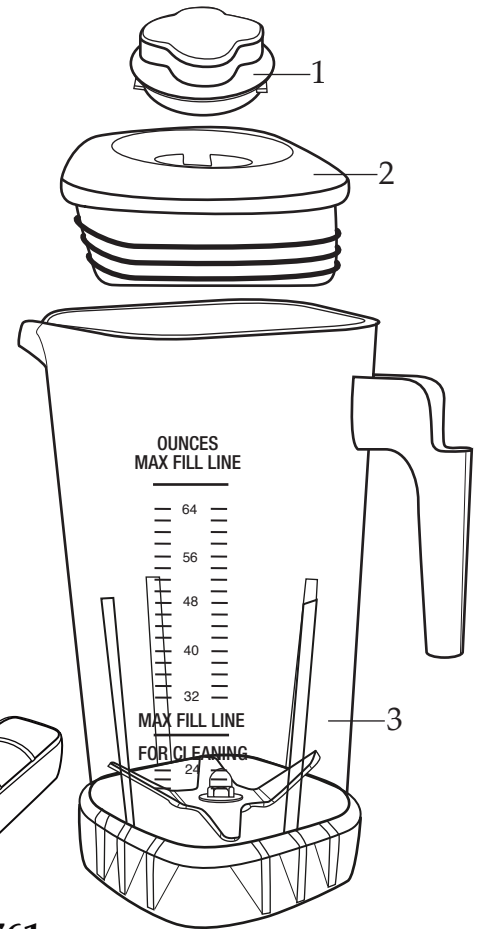
**033483**  
Brush/Spring  
(2 required)



**030889**  
Blending Assembly Kit



**013304**  
NSF Seal



**032761**  
MX Jar Wrench  
(optional)

Catalog	Model
MX1300XTX	MX1300XT41
MX1500XTX	MX1500XT42



Illustration#	Part#	Description
1	026425-E	Jar Lid Cover
2	026424-V	Vinyl Jar Lid <i>(changed after 12/3/2012)</i>
3	503326	64 oz. Stackable Raptor Container ONLY
	503398	64 oz. Stackable Raptor Container with Blending Assembly <i>(on units after 1/28/2011)</i>
	503350	64 oz. Stackable Container with Blending Assembly
4	503397	Blade Assembly <i>(changed after 1/28/2011)</i>
5	024271	Bearing Holder O Ring
6	024268	Nut Gasket
7	029631	Bearing Holder Nut
8	028538	Drive Clutch
9	026442	Jar Pad
10	035397	Leili Motor with Sensor <i>(on units after 9/1/2017)</i>
	028101	Motor with Sensor
11	026437	Dampening Plate Gasket
12	028032-09	Black Top Housing
13	028541	Motor Foam (2 required)
14	026439	Dampening Plate Bushing (4 required)
15	026453	Dampening Plate Sleeve (4 required)
16	026459	Washer
17	028929	Sems (4 required)
18	029812	Soft Start Control Panel <i>(changed after 3/16/2012)</i>
19	028248	Housing Rear Foam Baffle
20	028249	Housing Front Foam Baffle
21	028240-67	Motor Housing <i>(on units after 9/1/2017)</i>
	028240	Motor Housing
22	002943	Washer (2 required)
23	028247	Bottom Housing Foam Baffle
24	028542	Foam Baffle
25	026925	Cord Set

Catalog	Model
MX1300XTX	MX1300XT41
MX1500XTX	MX1500XT42

**Waring Factory Service Center**  
 314 Ella T. Grasso Ave.  
 Torrington, CT 06790  
 Tele. 1-800-269-6640  
 Fax 860-496-9017  
 www.waringcommercialproducts.com

Illustration #	Part #	Description
26	007556	Strain Relief
27	028241-09-X	Black Bottom Housing
28	012505	Screw (4 required)
29	026430	Corner Post (4 required)
30	028928	Sems (4 required)

